

#BOU2026


Birds and people

31 March – 2 April 2026 | University of Nottingham, UK & Zoom & Bluesky



PROGRAMME

Times are displayed in British Summer Time (BST). Check your local time using this [time zone convertor](#).

All presentations with a  Bluesky logo will be appearing on Bluesky at the indicated time.

DAY 1: TUESDAY, 31 MARCH 2026

1400-1700 **ECR WORKSHOPS** | The Exchange (C1 / C4 / C34)

1400-1930 **CONFERENCE REGISTRATION** | The Exchange

1800-1930 **DINNER** | The Atrium

ALFRED NEWTON LECTURE | THE EXCHANGE (C.LT2)

1930 **WELCOME**

Graeme Buchanan | BOU President & RSPB, UK

ALFRED NEWTON LECTURE

The natural history of a human-bird mutualism

Claire Spottiswoode (she/her) | FitzPatrick Institute of African Ornithology, University of Cape Town, South Africa



2030-late **BAR** | Jubilee Hotel

DAY 2: WEDNESDAY, 1 APRIL 2026

0730-0900 **BREAKFAST** | Jubilee Hotel

0830-0900 **CONFERENCE REGISTRATION** | The Exchange

SESSION 1 | THE EXCHANGE (C.LT2)

BIRDS IN CULTURE AND TRADITIONAL KNOWLEDGE OF BIRDS

Chair: James Hoggett | Natural England, UK

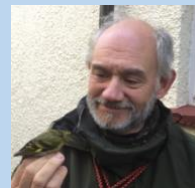
0900 **WELCOME**

Graeme Buchanan | BOU President & RSPB, UK

0905 **KEYNOTE**

Ethno-ornithology: science and society in dialogue

Andrew Gosler | University of Oxford, UK



#BOU2026

Birds and people

31 March – 2 April 2026 | University of Nottingham, UK & Zoom & Bluesky



- 0935 **Traditional honey-hunting and human-honeyguide interactions in Nigeria**
Ajik Anap Magaji (she/her) | A.P. Leventis Ornithological Research Institute (APLORI),
University of Jos, Nigeria | [@iamanapgrace.bsky.social](#)
- 0950 **Local Ecological Knowledge can shed light on past abundances of birds in understudied regions**
Daniel Villar (he/him) | Department of Anthropology, Durham University, UK & Ethno-Ornithology
World Atlas, Edward Grey Institute of Field Ornithology, University of Oxford, UK |
[@daniel-a-villar.bsky.social](#)
- 1005 **Hornbills and humans: connections and conservation in North Bengal, India**
Karishma Pradhan (she/her) | Nature Conservation Foundation (NCF), India
- 1020 **The fall of a florican: a contemporary history of studying the Bengal Florican**
Nisha Bhakat (she/they) | Archives at National Centre for Biological Sciences, India |
[@nickel-salt.bsky.social](#)
- 1035 **Speedy Posters**
30-second poster elevator pitches | Various presenters

1045- **MORNING BREAK** | The Exchange (C3)
1130 Tea, coffee & refreshments | Time to view poster and exhibits

1100 **Effects of urban high temperature and greenery on the breeding of Eurasian Tree Sparrow**
Bluesky Yutaro Okamura (he/him/his) | Meijo University, Japan | [@yutaro-okamura.bsky.social](#)

1115 **Conflicts between the White-cheeked Starling and people in Japan**
Bluesky Hiroshi Hashimoto (he/him/his) | Meijo University, Japan | [@hi-hashimoto.bsky.social](#)

1125 **Predator call exposure during avian embryogenesis alters nestling physiology**
Bluesky Raena McCown (she/her) | University of Georgia, USA | [@raena-mc-cown.bsky.social](#)

SESSION 2 | THE EXCHANGE (C.LT2)

CONSERVATION THROUGH HUMAN-BIRD CONNECTIONS

Chair: Natalia Zielonka (she/her) | Durrell Institute of Conservation & Ecology, University of Kent, UK

1130 **KEYNOTE**
Getting a wellbeing boost from birds
Zoe Davies | University of Kent, UK



1200 **Safeguarding hornbills through a Hornbill Nest Adoption Programme: a community-centric initiative**
Sana Huque | Nature Conservation Foundation (NCF), India

#BOU2026

Birds and people

31 March – 2 April 2026 | University of Nottingham, UK & Zoom & Bluesky



1215 **Human-honeyguide mutualism amid socio-economic change in northern Ghana (online)**

Wiro-Bless W. Kamboe (he/him) | FitzPatrick Institute of African Ornithology, University of Cape Town, South Africa

1230 **Human-bird Interactions in urban India: the level of extinction of experience in Kolkata**

Sarbasis Dutta (he/him/his) | University of Granada, Spain | [🐦](#)

1245- **LUNCH** | The Exchange (C3)

1415 Time to view poster and exhibits

1245 **Barriers and bridges: understanding how people act for birds and nature**

Bluesky Natalia Zielonka (she/her) | Durrell Institute of Conservation and Ecology, University of Kent, UK | [🐦 @natbzielonka.bsky.social](#)

1300 **A global review of research on human-wildlife conflicts involving raptors as predators**

Bluesky Koi Pillay (he/they) | University of Cape Town, South Africa | [🐦 @koipillay.bsky.social](#)

1315 **What is needed to save the world's birds? Understanding the conservation action gap**

Bluesky Holly Green | University of Sheffield, UK | [🐦](#)

1315- **WILDLIFE ACOUSTICS WORKSHOP** | The Exchange (C1)

1400 **Listening to birds: acoustic methods for effective bird surveys**

Carlos Abrahams | Wildlife Acoustics

1330 **Birds and people: bird conservation narratives used around the world**

Bluesky Jakub Kronenberg (he/him) | Social-Ecological Systems Analysis Lab, University of Lodz, Poland | [🐦 @jakubkronenberg.bsky.social](#)

1345 **The transformation of British society's relationship with birds at the turn of the 20th century**

Bluesky Jakub Kronenberg (he/him) | Social-Ecological Systems Analysis Lab, University of Lodz, Poland | [🐦 @jakubkronenberg.bsky.social](#)

1400 **Exploring the effects of linguistic imperialism on engagement with ornithological knowledge in Catalonia**

Bluesky Rowan Kuminski (they/them) | University of Aberdeen, UK | [🐦 @RowanKuminski.bsky.social](#)

1405 **Mutualism between honeyguides, beekeepers and honey-hunters in southern Tanzania**

Bluesky Amana Othman Kilawi (she/her) | Tanzania Forest Conservation Group, Tanzania | [🐦 @Kilawiothman.bsky.social](#)

#BOU2026

Birds and people

31 March – 2 April 2026 | University of Nottingham, UK & Zoom & Bluesky



SESSION 3 | THE EXCHANGE (C.LT2)

MODERN THREATS TO BIRDS AND THEIR MITIGATION

Chair: Christine Nicol | Royal Veterinary College, University of London, UK & Houghton Trust

1415 **HOUGHTON TRUST KEYNOTE**

Complex interplay between birds, humans and the environment for modern disease threats

Ian Brown | The Pirbright Institute, UK



1445 **Disease risks and people benefits: considering the complex pros and cons of garden bird feeding**

Joelene Hughes (she/her/hers) | RSPB, UK

1500 **Using bird science to mitigate human-bird conflicts**

Marcus Hagberg | Wild Goose Chase, Inc., USA

1515 **Time for a change? How best to use the law to protect birds**

Matthew Heydon | Natural England, UK | [@mattheydon.bsky.social](#)

1530- **AFTERNOON BREAK** | The Exchange (C3)

1615 Tea, coffee & refreshments | Time to view poster and exhibits

1530 **Can bird morphology and ancestry explain drone noise sensitivity? Insights from comparative modelling approaches**

Bluesky

Glen Hancocks | University of Salford, UK | [@gleneth93.bsky.social](#)

1545 **Investigating the impact of UAV noise on bird activity: a playback experiment**

Bluesky

Sam Barrett (he/him) | University of Salford, UK | [@sambarrett97.bsky.social](#)

1555 **Recreational honey-hunting with honeyguides in the Kingdom of Eswatini**

Bluesky

Sanele Nhlabatsi | University of Eswatini, Eswatini | [@sanele.nhlabatsi](#)

1600 **Using bioacoustics to assess the impact of evergreen invasive plants on bird communities in Wales, United Kingdom**

Bluesky

Oluwadunsin Adekola (he/him) | Sparsholt College, UK | [@oluwadunsin](#)

SESSION 4 | THE EXCHANGE (C.LT2)

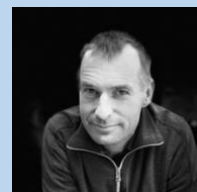
HUMAN VALUES AND THEIR EFFECTS ON BIRD CONSERVATION

Chair: Nishant Kumar | Ambedkar University Delhi & National Centre for Biological Sciences (TIFR), Bengaluru, India & University of Oxford, UK

1615 **KEYNOTE**

The origins, dispersal and evolutionary history of chickens

Greger Larson | University of Oxford, UK



#BOU2026

Birds and people

31 March – 2 April 2026 | University of Nottingham, UK & Zoom & Bluesky



- 1645 **Use of anthropogenic landscapes in wild Rock Doves**
Will Smith | University of Nottingham, UK | [@willjsmith.bsky.social](#)
- 1700 **Using social sciences to inform the development of licensing policy for falconry wild take**
James Hoggett | Natural England, UK
- 1715 **How are the birds' interests recognised in decision-making? The debate on mandating swift bricks**
Jakub Kronenberg (he/him) | Social-Ecological Systems Analysis Lab, University of Lodz, Poland | [@jakubkronenberg.bsky.social](#)
- 1730 **Aesthetic values of people both support and degrade bird conservation**
Anna Haukka (she/her) | University of Helsinki, Finland | [@annaha.bsky.social](#)
- 1745 **Presentation of BOU Early Professional Award and Janet Kear Union Medal**

- 1800-1830 **BOU AGM** | The Exchange (C.LT2)
All welcome
- 1800-late **BAR** | Jubilee Hotel
- 1830-1930 **BOU ECR EVENT** | The Exchange Foyer (Ground Floor)
Roundtable event for ECRs, with free bar
- 1930-2030 **DINNER** | The Atrium

DAY 3: THURSDAY, 2 APRIL 2026

- 0730-0900 **BREAKFAST** | Jubilee Hotel
- 0830-0900 **CONFERENCE REGISTRATION** | The Exchange

SESSION 5 | THE EXCHANGE (C.LT2) BIRD RESPONSES TO HUMAN DISTURBANCE AND RISK

- 0900 **KEYNOTE**
Understanding how disturbance affects birds is crucial to their conservation
Will Cresswell | University of St Andrews, UK





- 0930 **Antipredator behaviour in birds changes according to urban landscape configuration**
Anna Ramos Chernenko | University of Granada, Spain
- 0945 **Tweet or retreat? Recreation impacts on passerines in Scotland (online)**
Amber Cowans (she/her) | University of St Andrews, UK | [@ambercowans](#)
- 1000 **A predictive model for short-term bird movement to evaluate the probability of bird strikes**
Graciela de Cuba (she/her) | University of Amsterdam, Netherlands & German Aerospace Center, Germany
- 1015 **Speedy Posters**
30-second poster elevator pitches | Various presenters

1030-1115 **MORNING BREAK** | The Exchange (C3)
Tea, coffee & refreshments | Time to view posters and exhibits

1025 Bluesky **Community perception of vultures in bridging areas: challenges and opportunity for coexistence**
Pascal Murhula Mirindi (he/him) | Gaston Berger University & Cheikh Anta Diop University, Senegal & Université Officielle de Bukavu, Democratic Republic of the Congo | [@pascalmirindi](#)

1030 Bluesky **No place like home! Understanding landowner motivations for engaging in bobwhite conservation in Kansas, USA**
Bhavya Iyer | University of Georgia, USA | [@bhavyaiyer](#)

1035 Bluesky **Can the common interests of conservation and shooting be harnessed for mutual benefits?**
Mark Eddowes (he/him) | Independent Researcher, UK | [@markeddowes.bsky.social](#)

SESSION 6 | THE EXCHANGE (C.LT2)

URBAN BIRDS: ADAPTATION AND ECOLOGY OF BIRDS AND PEOPLE TO URBANISATION

- Chair: Joeline Hughes (she/her/hers) | RSPB, UK
- 1115 **KEYNOTE**
Who gets to see urban birds? Environmental inequality in African cities
Chevonne Reynolds | University of the Witwatersrand, South Africa
- 1145 **Landfills as both risk and resource for juvenile White Storks during first migration**
Florian Orgeret (he/him) | La Rochelle Université, France | [@florgeret.bsky.social](#)
- 1200 **Hot in the city: can human presence modify the effects of high temperatures on urban birds? (online)**
Leslie Fatuma Bayanza (she/her/hers) | FitzPatrick Institute of African Ornithology, University of Cape Town, South Africa



#BOU2026

Birds and people

31 March – 2 April 2026 | University of Nottingham, UK & Zoom & Bluesky



1215 **Parenting in the Anthropocene: sex-specific differences in care in House Sparrows across urban and rural habitats (online)**

Agnes Francila (she/her) | Indian Institute of Science Education and Research Bhopal (IISERB), India | [@agnesfrancila.bsky.social](#)

1230 **Breeding around agriculture: the disadvantage of abundance (online)**

Aviad Heifetz | Open University of Israel, Israel

1245-1415 **LUNCH** | The Exchange (C3)

Time to view poster and exhibits

1240 **Monitoring bird communities during development: lessons from a Caribbean case study**

Bluesky Holly Trew | Deborah Brosnan & Associates, USA | [@hollytrew](#)

1300 **From campus discovery to community stewardship: a Shenzhen coastal story**

Bluesky Haichao Zhou (he/him) | Shenzhen University, China | [@haichaozhou](#)

1315 **Drivers of changes in ranges of European waterbirds and implications for wetland conservation**

Bluesky Ledi Selgjekaj (she/her) | University of Debrecen, Hungary | [@lediselgjekaj.bsky.social](#)

1315-1400 **EARTHRANGER WORKSHOP** | The Exchange (C1)

Mathias D'haen | EarthRanger

1330 **Exploring local insights on the drivers of Nigeria's Grey Parrots decline and its conservation implications**

Bluesky Ngozi Mercy Okafor (she/her) | A. P Leventis Ornithological Research Institute (APLORI), Nigeria | [@ngozimercyokafor](#)

1345 **Honey-hunting with honeyguides in northern Malawi: insights and lessons for conservation**

Bluesky George Malembo M'manga (he/him/his) | Mzuzu University, Malawi | [@georgem88.bsky.social](#)

SESSION 7 | THE EXCHANGE (C.LT2)

BIRDS, PEOPLE AND DATA: THE POWER OF COMMUNITY SCIENCE

Chair: Alice Risely | University of Salford, UK

1415 **Tracking the urban ecology of the Australian White Ibis: GPS vs citizen science approaches**

Dominique Potvin (she/her) | University of the Sunshine Coast, Australia | [@silveryedom.bsky.social](#)

1430 **Nature-culture linkages: co-existence of people with Barn Swallows (*Hirundo rustica*) in the Himalaya**

Amarjeet Kaur (she/her) | Wildlife Institute of India, India | [@amarjeetkaur.bsky.social](#)

#BOU2026

Birds and people

31 March – 2 April 2026 | University of Nottingham, UK & Zoom & Bluesky



1445 **From wetlands to lawns: White Ibis urbanization in Florida through the lens of community science**

Doreen Chaussadas (she/they) | University of Georgia, USA | [@doreenbirds.bsky.social](#)

1500 **KEYNOTE**

From persecution to protection: tracking Galápagos Short-eared Owls through human-driven change

Petra Sumasgutner | Konrad Lorenz Research Center, University of Vienna, Austria | [@pesumas.bsky.social](#)



1530 **CONFERENCE CLOSE**

Graeme Buchanan | BOU President & RSPB, UK

1545- **AFTERNOON BREAK** | The Exchange (C3)

1615 Tea, coffee & refreshments | Time to view poster and exhibits

1615 **DEPARTURE**